

PANELES SOLARES

TRANSFORMANDO LA **LUZ DEL SOL**
EN UN FUTURO BRILLANTE

www.megabright.cl

MEGABRIGHT

MEGABRIGHT

PANEL SOLAR TOPCon

PANEL SOLAR MONOCRISTALINO BIFACIAL 605W

ODA-144MHD



Tecnología SMBB
Mejor captura de luz y recolección de corriente para mejorar la potencia del módulo y su fiabilidad

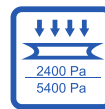
• Disponible con marco de color negro



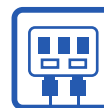
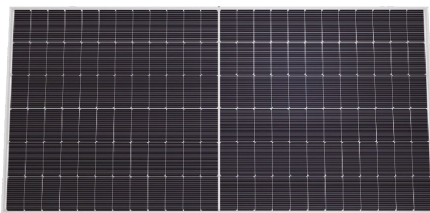
Resistencia PID
Excelente rendimiento Anti-PID garantizado a través de procesos de producción optimizados y control de materiales



Mayor potencia de salida
La potencia del módulo aumenta entre 5-25 %, generando un LCOE más bajo y mayor TIR



Carga mecánica mejorada
Certificación contra carga de viento (2400 Pa) y carga de nieve (5400 Pa).



Caja de conexiones
Protección IP68 resistente al agua
Corriente máxima: 20 A.
Voltaje máximo del sistema: 1500 V DC



Marco
Alta resistencia mecánica.
Certificado para cargas de hasta 5400 Pa.
Aleación de aluminio anodizado

IEC61215:2021/IEC61730:2023
IEC61701/IEC62716/IEC60068/IEC62804
ISO9001:2015 / Certificación de gestión de calidad
ISO14001:2015 / Certificación de gestión ambiental
ISO45001:2018 / Certificación salud y seguridad ocupacional
ISO14067:2018/PAS2050:2011

ODA-144MHD

Especificaciones técnicas

MODELO	ODA-144MHD				
SKU	100300585				

SPECIFICATION (STC) Irradiance at 1000 W/m², Cell Temp 25°C, Air Mass AM1.5

MODEL TYPE	ODA585-36V-MHD	ODA590-36V-MHD	ODA595-36V-MHD	ODA600-36V-MHD	ODA605-36V-MHD
Rated Peak Power-Pmax(Wp)	585.00	590.00	595.00	600.00	605.00
Maximum Power Voltage-Vmp(V)	44.81	44.87	44.93	44.99	45.05
Maximum Power Current-Imp(A)	13.05	13.15	13.24	13.34	13.43
Open Circuit Voltage-Voc(V)	52.72±3%	52.79±3%	52.86±3%	52.93±3%	53.00±3%
Short Circuit Current-Isc(A)	13.87±3%	13.97±3%	14.07±3%	14.17±3%	14.27±3%
Module Efficiency(%)	22.65	22.84	23.03	23.23	23.42

ELECTRICAL DATA(BNPI) Irradiance at 1000 W/m², Back irradiance 135 W/m², Cell Temp 25°C, Air Mass AM1.5

Rated Peak Power-Pmax(Wp)	648.00	654.00	659.00	665.00	671.00
Maximum Power Voltage-Vmp(V)	44.95	45.01	45.07	45.13	45.19
Maximum Power Current-Imp(A)	14.42	14.53	14.63	14.74	14.84
Open Circuit Voltage-Voc(V)	52.88±3%	52.95±3%	53.02±3%	53.09±3%	53.16±3%
Short Circuit Current-Isc(A)	15.33±3%	15.44±3%	15.55±3%	15.66±3%	15.77±3%

MECHANICAL CHARACTERISTICS

Cell Type (mm)	182*91 N-Type Mono
No. Of Cells	144(12*12)
Module Dimensions(mm)	2278*1134*30
Weight	31.50 kg
Bifacial Glass Front Glass(mm)	2.0mm AR Coating Tempered Glass
Bifacial Glass Back Glass(mm)	2.0mm Glazed Glass
Frame	Anodized Aluminium Alloy(Silver)
Junction Box	IP68, 1500VDC, 3 Schottky Bypass Diodes
Cables	4.0mm ² , Positive(+)300mm, Negative(-)300mm, Or Customized Length
Connector	IP68
Snow Load/Wind Load	5400Pa/2400Pa
Class Of Safety Protection	Class II
IEC Component Fire Rating	Class A

OPERATING PARAMETERS

Maximum System Voltage	1500V
Operational Temp	-40~+85 °C
Max Series Fuse Rating	25A
Nominal Module Operating Temp (NMOT)	45±2°C

TEMP COEFFICIENT

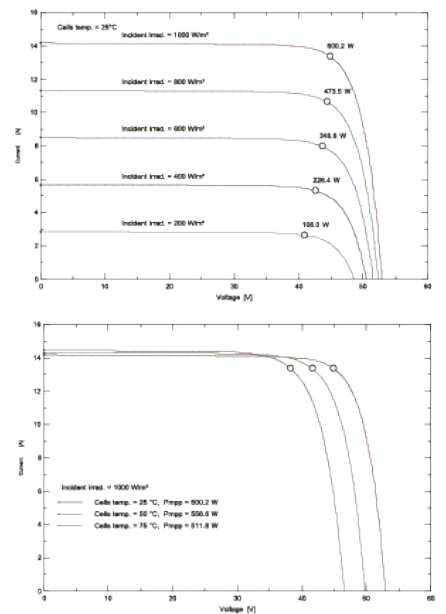
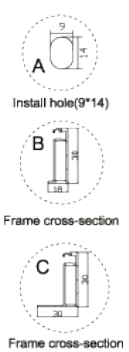
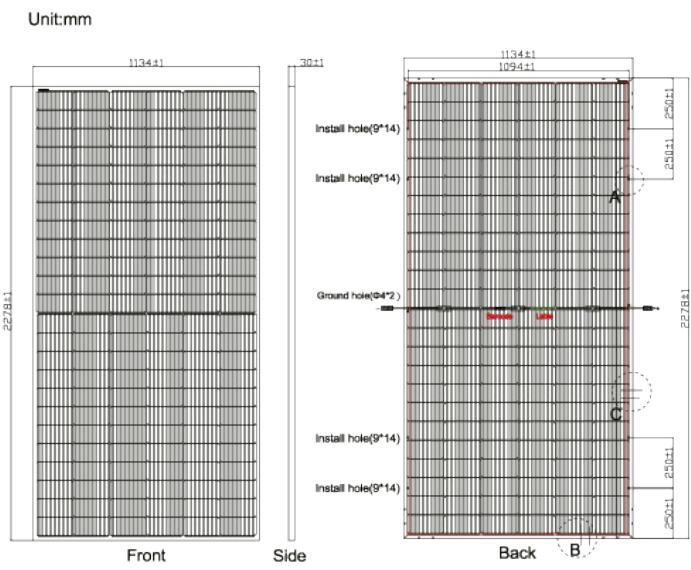
Temp Coefficient Of Pmax	-0.290%/°C
Temp Coefficient Of Voc	-0.250%/°C
Temp Coefficient Of Isc	+0.045%/°C

PACKING STANDARD 40ft (HQ)

Number Of Modules Per Pallet	37
Number Of Pallets Per Container	20
Number Of Modules Per Container	740

ASSEMBLY DRAWING

IV CURVE (600W)



MEGABRIGHT

PANEL SOLAR TOPCon

PANEL SOLAR MONOCRISTALINO MONOFACIAL 605W

ODA-144MH



Tecnología SMBB
Mejor captura de luz y recolección de corriente para mejorar la potencia del módulo y su fiabilidad

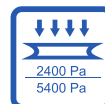
• Disponible con marco de color negro



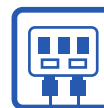
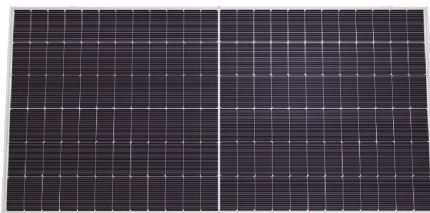
Resistencia PID
Excelente rendimiento Anti-PID garantizado a través de procesos de producción optimizados y control de materiales



Mayor potencia de salida
La potencia del módulo aumenta entre 5-25 %, generando un LCOE más bajo y mayor TIR



Carga mecánica mejorada
Certificación contra carga de viento (2400 Pa) y carga de nieve (5400 Pa).



Caja de conexiones
Protección IP68 resistente al agua
Corriente máxima: 20 A.
Voltaje máximo del sistema: 1500 V DC



Marco
Alta resistencia mecánica.
Certificado para cargas de hasta 5400 Pa.
Aleación de aluminio anodizado

IEC61215:2021/IEC61730:2023
IEC61701/IEC62716/IEC60068/IEC62804
ISO9001:2015 / Certificación de gestión de calidad
ISO14001:2015 / Certificación de gestión ambiental
ISO45001:2018 / Certificación salud y seguridad ocupacional
ISO14067:2018/PAS2050:2011

ODA-144MH

Especificaciones técnicas

MODELO	ODA-144MH				
SKU	100400585				

SPECIFICATION (STC) Irradiance at 1000 W/m², Cell Temp 25°C, Air Mass AM1.5

MODEL TYPE	ODA585-36V-MH	ODA590-36V-MH	ODA595-36V-MH	ODA600-36V-MH	ODA605-36V-MH
Rated Peak Power-Pmax(Wp)	585.00	590.00	595.00	600.00	605.00
Maximum Power Voltage-Vmp(V)	44.81	44.87	44.93	44.99	45.05
Maximum Power Current-Imp(A)	13.05	13.15	13.24	13.34	13.43
Open Circuit Voltage-Voc(V)	52.72±3%	52.79±3%	52.86±3%	52.93±3%	53.00±3%
Short Circuit Current-Isc(A)	13.87±3%	13.97±3%	14.07±3%	14.17±3%	14.27±3%
Module Efficiency(%)	22.65	22.84	23.03	23.23	23.42

ELECTRICAL DATA(BNPI) Irradiance at 1000 W/m², Back irradiance 135 W/m², Cell Temp 25°C, Air Mass AM1.5

Rated Peak Power-Pmax(Wp)	648.00	654.00	659.00	665.00	671.00
Maximum Power Voltage-Vmp(V)	44.95	45.01	45.07	45.13	45.19
Maximum Power Current-Imp(A)	14.42	14.53	14.63	14.74	14.84
Open Circuit Voltage-Voc(V)	52.88±3%	52.95±3%	53.02±3%	53.09±3%	53.16±3%
Short Circuit Current-Isc(A)	15.33±3%	15.44±3%	15.55±3%	15.66±3%	15.77±3%

MECHANICAL CHARACTERISTICS

Cell Type (mm)	182*91 N-Type Mono
No. Of Cells	144(12*12)
Module Dimensions(mm)	2278*1134*30
Weight	27.40 kg
Monofacial Front Glass(mm)	3.2 mm High Transmission
Frame	Anodized Aluminium Alloy(Silver)
Junction Box	IP68, 1500VDC, 3 Schottky Bypass Diodes
Cables	4.0mm ² , Positive(+)300mm, Negative(-)300mm, Or Customized Length
Connector	IP68
Snow Load/Wind Load	5400Pa/2400Pa
Class Of Safety Protection	Class II
IEC Component Fire Rating	Class A

OPERATING PARAMETERS

Maximum System Voltage	1500V
Operational Temp	-40~+85 °C
Max Series Fuse Rating	25A
Nominal Module Operating Temp (NMOT)	45±2°C

TEMP COEFFICIENT

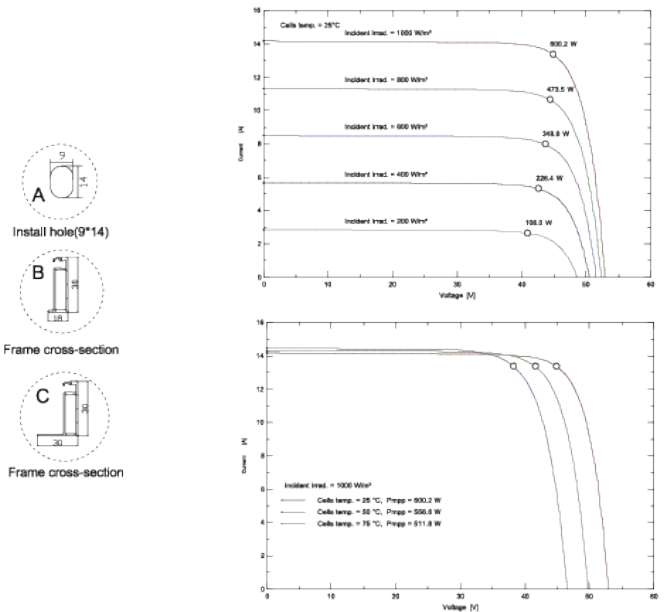
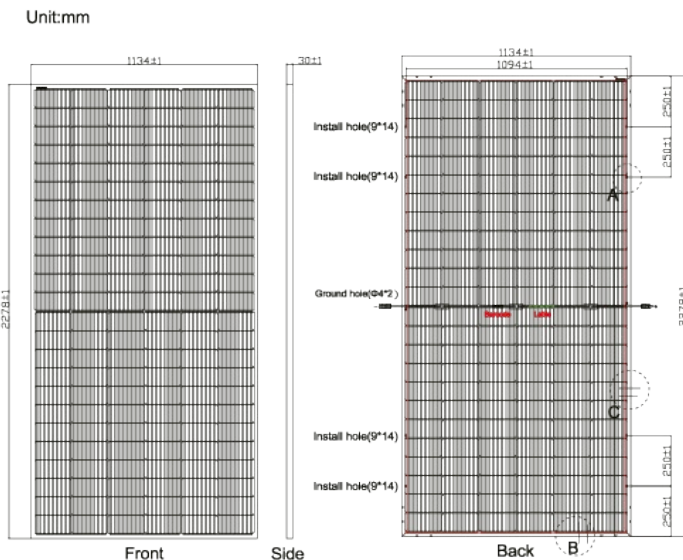
Temp Coefficient Of Pmax	-0.290%/°C
Temp Coefficient Of Voc	-0.250%/°C
Temp Coefficient Of Isc	+0.045%/°C

PACKING STANDARD 40ft (HQ)

Number Of Modules Per Pallet	37
Number Of Pallets Per Container	20
Number Of Modules Per Container	740

ASSEMBLY DRAWING

IV CURVE (600W)



MEGABRIGHT

PANEL SOLAR TOPCon

PANEL SOLAR MONOCRISTALINO BIFACIAL 650W

ODA-132MHDRz



Excelente coeficiente de temperatura (Pmax): $-0.29\%/^{\circ}\text{C}$



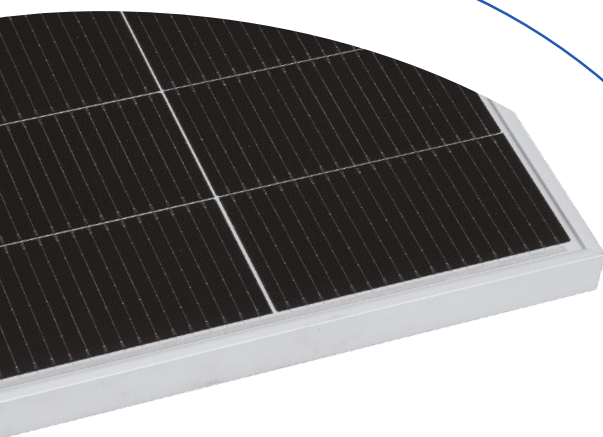
Excelente rendimiento con poca luz: generación de energía prolongada hasta 1 hora aproximadamente por la mañana y por la noche



Tiene menor atenuación LID/LeTID

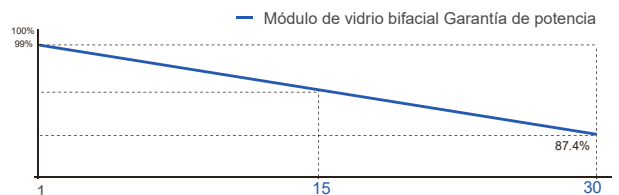


Con una tasa bifacial del $80\% \pm 10\%$, las ganancias de potencia bifacial reducen significativamente el LCOE, ya que la parte trasera está expuesta a más luz



IEC61215:2021/IEC61730:2023
IEC61701/IEC62716/IEC60068/IEC62804
ISO9001:2015 / Certificación de gestión de calidad
ISO14001:2015 / Certificación de gestión ambiental
ISO45001:2018 / Certificación salud y seguridad ocupacional
ISO14067:2018/PAS2050:2011

• Disponible con marco de color negro



ODA-132MHDRz

Especificaciones técnicas

SPECIFICATION (STC) Irradiance at 1000 W/m², Cell Temp 25°C, Air Mass AM1.5

MODEL TYPE	ODA630-33V-MHDRz	ODA635-33V-MHDRz	ODA640-33V-MHDRz	ODA645-33V-MHDRz	ODA650-33V-MHDRz
Rated Peak Power-Pmax(Wp)	630.00	635.00	640.00	645.00	650.00
Maximum Power Voltage-Vmp(V)	41.55	41.59	41.63	41.68	41.72
Maximum Power Current-Imp(A)	15.16	15.27	15.37	15.47	15.58
Open Circuit Voltage-Voc(V)	48.88±3%	48.93±3%	48.98±3%	49.03±3%	49.08±3%
Short Circuit Current-Isc(A)	16.11±3%	16.22±3%	16.33±3%	16.44±3%	16.55±3%
Module Efficiency(%)	23.32	23.51	23.69	23.87	24.06

ELECTRICAL DATA(BNPI) Irradiance at 1000 W/m², Back Irradiance 135 W/m², Cell Temp 25°C, Air Mass AM1.5

Rated Peak Power-Pmax(Wp)	698.00	704.00	709.00	715.00	720.00
Maximum Power Voltage-Vmp(V)	41.67	41.72	41.76	41.80	41.84
Maximum Power Current-Imp(A)	16.75	16.87	16.98	17.10	17.21
Open Circuit Voltage-Voc(V)	49.03±3%	49.08±3%	49.13±3%	49.18±3%	49.23±3%
Short Circuit Current-Isc(A)	17.80±3%	17.92±3%	18.04±3%	18.17±3%	18.29±3%

MECHANICAL CHARACTERISTICS

Cell Type (mm)	182*105 N-Type Mono
No. Of Cells	132(12*11)
Module Dimensions(mm)	2382*1134*30
Weight	32.40 kg
Bifacial Glass Front Glass(mm)	2.0mm AR Coating Tempered Glass
Bifacial Glass Back Glass(mm)	2.0mm Glazed Glass
Frame	Anodized Aluminium Alloy(Silver)
Junction Box	IP68, 1500VDC, 3 Schottky Bypass Diodes
Cables	4.0mm ² , Positive(+)300mm, Negative(-)300mm, Or Customized Length
Connector	IP68
Snow Load/Wind Load	5400Pa/2400Pa
Class Of Safety Protection	Class II
IEC Component Fire Rating	Class A

OPERATING PARAMETERS

Maximum System Voltage	1500V
Operational Temp	-40~+85 °C
Max Series Fuse Rating	28A
Nominal Module Operating Temp (NMOT)	45±2°C

TEMP COEFFICIENT

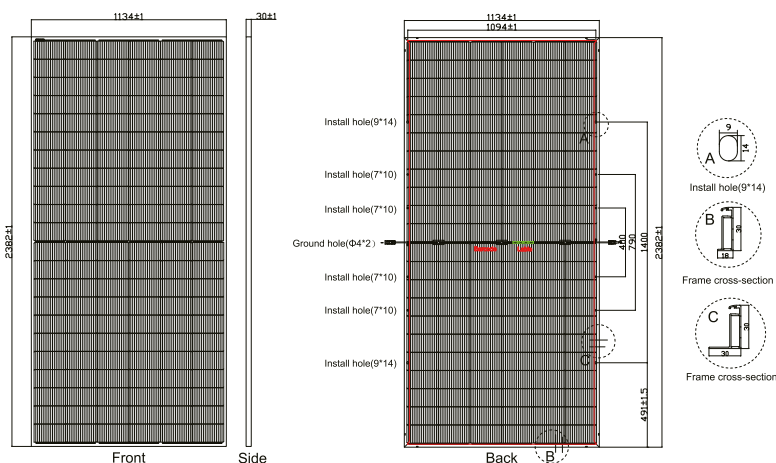
Temp Coefficient Of Pmax	-0.290%/°C
Temp Coefficient Of Voc	-0.250%/°C
Temp Coefficient Of Isc	+0.045%/°C

PACKING STANDARD 40ft (HQ)

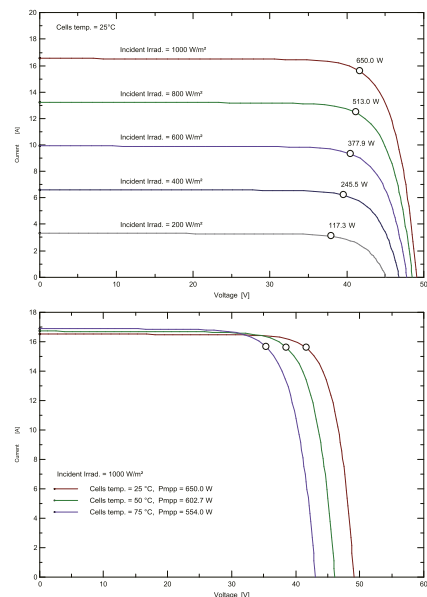
Number Of Modules Per Pallet	37
Number Of Pallets Per Container	20
Number Of Modules Per Container	740

ASSEMBLY DRAWING

Unit:mm



IV CURVE (650W)



Specifications included in this datasheet are subject to change without notice.

MEGABRIGHT

PANEL SOLAR TOPCon

PANEL SOLAR MONOCRISTALINO BIFACIAL 730W

ODA-132MHD



Excelente coeficiente de temperatura (Pmax): $-0.29\%/^{\circ}\text{C}$



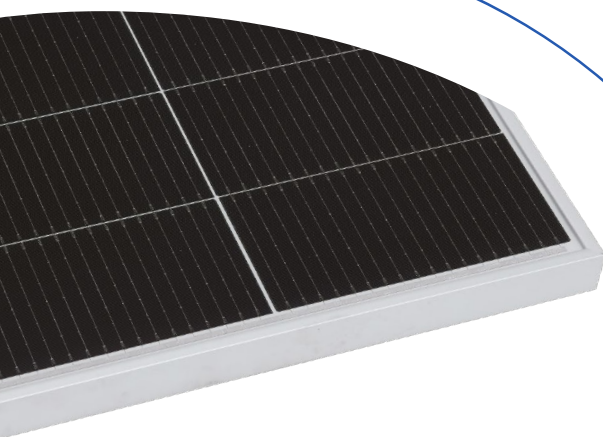
Excelente rendimiento con poca luz: generación de energía prolongada hasta 1 hora aproximadamente por la mañana y por la noche



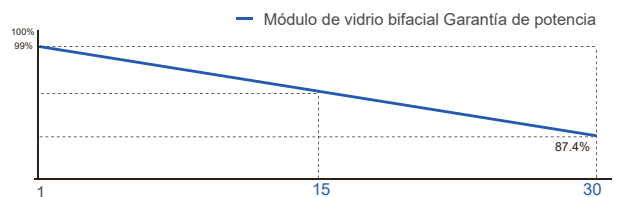
Tiene menor atenuación LID/LeTID



Con una tasa bifacial del $80\% \pm 10\%$, las ganancias de potencia bifacial reducen significativamente el LCOE, ya que la parte trasera está expuesta a más luz



• Disponible con marco de color negro



IEC61215:2021/IEC61730:2023
IEC61701/IEC62716/IEC60068/IEC62804
ISO9001:2015 / Certificación de gestión de calidad
ISO14001:2015 / Certificación de gestión ambiental
ISO45001:2018 / Certificación salud y seguridad ocupacional
ISO14067:2018/PAS2050:2011

ODA-132MHD

Especificaciones técnicas

SPECIFICATION (STC) Irradiance at 1000 W/m², Cell Temp 25°C, Air Mass AM1.5

MODEL TYPE	ODA710-33V-MHD	ODA715-33V-MHD	ODA720-33V-MHD	ODA725-33V-MHD	ODA730-33V-MHD
Rated Peak Power-Pmax(Wp)	710.00	715.00	720.00	725.00	730.00
Maximum Power Voltage-Vmp(V)	40.78	40.90	41.00	41.13	41.25
Maximum Power Current-Imp(A)	17.41	17.48	17.56	17.63	17.70
Open Circuit Voltage-Voc(V)	48.84±3%	48.98±3%	49.10±3%	49.26±3%	49.40±3%
Short Circuit Current-Isc(A)	18.40±3%	18.48±3%	18.56±3%	18.63±3%	18.71±3%
Module Efficiency(%)	22.86	23.02	23.18	23.34	23.50

ELECTRICAL DATA(BNPI) Irradiance at 1000 W/m², Back irradiance 135 W/m², Cell Temp 25°C, Air Mass AM1.5

Rated Peak Power-Pmax(Wp)	787.00	792.00	798.00	804.00	809.00
Maximum Power Voltage-Vmp(V)	40.90	41.02	41.12	41.26	41.37
Maximum Power Current-Imp(A)	19.24	19.32	19.40	19.48	19.56
Open Circuit Voltage-Voc(V)	48.99±3%	49.13±3%	49.25±3%	49.41±3%	49.55±3%
Short Circuit Current-Isc(A)	20.33±3%	20.42±3%	20.51±3%	20.59±3%	20.67±3%

MECHANICAL CHARACTERISTICS

Cell Type (mm)	210*105 N-Type Mono
No. Of Cells	132(12*11)
Module Dimensions(mm)	2384*1303*33
Weight	38.00 kg
Bifacial Glass Front Glass(mm)	2.0mm AR Coating Tempered Glass
Bifacial Glass Back Glass(mm)	2.0mm Glazed Glass
Frame	Anodized Aluminium Alloy(Silver)
Junction Box	IP68,1500VDC, 3 Schottky Bypass Diodes
Cables	4.0mm ² ,Positive(+)300mm,Negative(-)300mm, Or Customized Length
Connector	IP68
Snow Load/Wind Load	5400Pa/2400Pa
Class Of Safety Protection	Class II
IEC Component Fire Rating	Class A

OPERATING PARAMETERS

Maximum System Voltage	1500V
Operational Temp	-40~+85 °C
Max Series Fuse Rating	30A
Nominal Module Operating Temp (NMOT)	45±2°C

TEMP COEFFICIENT

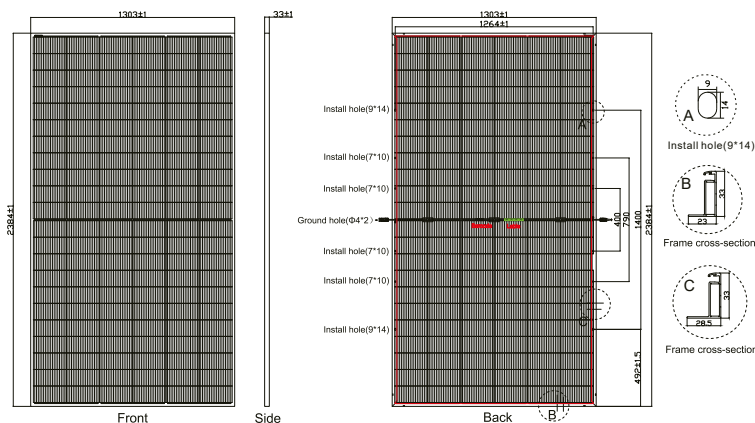
Temp Coefficient Of Pmax	-0.290%/°C
Temp Coefficient Of Voc	-0.250%/°C
Temp Coefficient Of Isc	+0.045%/°C

PACKING STANDARD 40ft (HQ)

Number Of Modules Per Pallet	33
Number Of Pallets Per Container	18
Number Of Modules Per Container	594

ASSEMBLY DRAWING

Unit:mm



IV CURVE (730W)

